

# Pratique

Friends of Woodman Point Recreation Camp  
The Isolation Hospital, 74 O'Kane Court, Munster WA 6166  
Email: [friends@woodmanpointquarantinationstation.com](mailto:friends@woodmanpointquarantinationstation.com)



<http://www.woodmanpointquarantinationstation.com>



<https://www.facebook.com/friendsofwoodmanpointrc/>

**SUMMER 2020**

## CREMATORIUM REPAIRS

A lot has changed in the past 100 years since the world's last pandemic, but an enduring characteristic of the Australian psyche remains, and that is our readiness to help one another. This story demonstrates that collective community conscience underlying the Australian way of life, with a reverent nod to the last time our world was turned upside down by a virus, and to those who worked tirelessly to contain it.

During the recent painting of the Crematorium, wear and tear became apparent on the building's chimney. There were fears that missing bricks and mortar near the chimney's base had the potential to compromise the stack, given its weight bearing load and overall age.

Following discussion between Friends and Camp management, contact was made with Parks and Wildlife Services who have responsibility for the maintenance of the Crematorium and it was agreed that restorative work would be listed on its future maintenance schedules.

Friends committee member Graeme Churcher, a direct descendant of Woodman Point Quarantine Station officer in charge Frank Churcher and his wife Annie née Herlihy, believed this was

## More about quarantine flags

So what was the significance of a ship flying a yellow and black chequered flag in days gone by??



If a yellow and a yellow and black chequered flag were flying as a ship approached port, it meant a person on board was suffering from a quarantinable disease. And if two yellow flags were flying, it meant someone had been suffering from a quarantinable disease for more than five days.

This was important because it helped quarantine officers determine if the patient was still contagious.

*From Wikipedia, the free encyclopedia*

a project that may attract significant community interest and approached contractors working for Cockburn Cement, namely contractors Veolia and Mercer & Co to visit the site and inspect the proposed restorative work. Following this inspection, both Veolia and Mercer & Co agreed to provide their companies' resources and technical expertise to assist Friends to have the chimney stack professionally repaired.

Following advice that a

scaffolding structure would be necessary to ensure repair workers could access the chimney stack safely, Graeme

approached Perth Scaffolding owner Barry Lloyd who inspected the site along with Graeme and Mike Poore and agreed to oversee the scaffolding construction and provide the necessary security fencing/signage for the work area.

Graeme has since written, with help from Dot Longnecker from Mercer & Co, a proposed works document that has been passed through Camp management and the relevant government departments.

With scaffolding now erected, Mercer & Co will inspect the chimney at close range and provide a structural review of the chimney condition and the work to be completed. This will include the repair

methodology. The actual scope of works will then be verified, and restorative work will commence.



The construction of a limestone pathway to the former morgue site to enable its inclusion in heritage tours has also been approved by Parks and Wildlife Services. This pathway has been cleared of leaf litter and other trip hazards such as dead branches to allow crushed limestone to form a more desirable public accessway to the morgue slab. Graeme has again been at work with his local contacts, Erceg, who have provided a truck load of crushed limestone to be dropped off and another contactor, M J Walker, to distribute and compact the crushed limestone to form the pathway under the guidance of Friends Mike Poore.



This entire project has truly been a case of ‘from little things, big things grow’. From a discussion at our September meeting, Friends have witnessed the full extent of community business generosity and support as all work and resources for both projects have been kindly donated by local companies. Thanks to Graeme and his contacts, this has become an incredible outcome for Friends and illustrates so well the amazing community support Friends has generated that helps us to continue to enhance this very special heritage site.

## FROM THE PAGES OF HISTORY

*The next in a series of articles of sites at Woodman Point that may no longer exist or may have faded from our memory.*

### The Gate House and Guard Hut

In 1909, Plague Road ceased to be the official entrance to the Woodman Point Quarantine Station. It was replaced with a new approach road a little to the south of Plague Road and, along with it, a new entrance gate to the Station was built.

The new entrance gate was an unsophisticated structure made simply of strong wooden beams, and held locked by



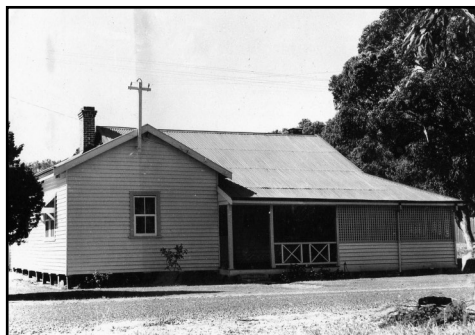
a simple metal latch. A bold sign indicated the purpose of the site and that no admission to the public was allowed.

This system was in place until relatively recent times, and reflected an era when the general public did as they were told, rarely challenging rulings put in place by the authorities. The severity of a quarantine lockdown though necessitated a stronger message and during those times, another sign hung on the gate itself proclaiming “SMALLPOX KEEP OUT” and so the general public did just that..



Officer in charge Roy McIntosh farewells quarantined children from the *Orcades* at the quarantine station gate in January 1951.

In about 1923, a house, known as the gate house, and a guard hut were built at the entrance.



The gate house housed the family of one of the quarantine officers employed at Woodman Point. Built of weatherboard and with a tin roof, and wide verandah, the gate house had, up to the mid-1950s, one of only two telephone on the station – the other in the station office. It was, over time, home to, amongst others, the Bopp, Marsh, Poore, Stock and Sutton families. The gate house was demolished in the late 1960s.

The guard hut was the link between the Quarantine Station and the wider community in periods of quarantine lockdown. During these times, quarantine doctors would use the guard hut to enter the station. Here they would change clothing and have a disinfectant shower, both before entering and leaving the station.

During periods of ongoing quarantine lockdown, food and other supplies were also delivered by local providers and left at the guard hut. After the provider had driven away, quarantine staff would take the supplies and distribute them to the kitchens, hospital and various offices around the station.

The guard hut was moved from the entrance of the Station to a location near the air raid shelter in the late 1960s (picture below left) where it was used as an office until its demolition in 2006.



## REMEMBRANCE DAY 2020

Former president Jenni Carder represented Friends at a Remembrance Day commemoration held at Anzac Cottage in Mount Hawthorn.

Anzac Cottage was built by community effort in a single day in February 1916 as both a memorial to the soldiers who died in the Gallipoli Campaign and as a home for one of the wounded returning men. It was occupied by Private John Porter, a Gallipoli veteran, and his family until the 1960s and, since then, has been a museum paying tribute to the Porter family, and the men and women who built the house in 1916.

Anzac House invites speakers to address their supporters and community and Jenni's presentation offered a offered valuable insight into the *Boonah* tragedy and the Spanish Influenza pandemic, together with the story of the nurses from the *Wyreema*.



Jenni is pictured following her presentation, with Anne Chapple, the Secretary of The Friends of Anzac Cottage.



## REMEMBERING SISTER BARBARA

On 19 October, Sister Eugenia and five other Sisters from the St John of God community in Subiaco visited Woodman Point to remember their fellow Sisters who had stayed in the Observation Hospital, now Jervoise dormitory, in March 1930 while they nursed patients sick from a smallpox outbreak.



Sr Barbara (Mary Gertrude Smith) from their community fell sick to smallpox whilst nursing and was in turn, nursed by Bertie Poore for 30 days until she passed away on 17 March 1930. Sr Barbara was cremated the same day in the Woodman Point Crematorium.

The Sisters laid flowers at the Crematorium, said a prayer for Sr Barbara in Jervoise and then sang a



beautiful song on the beach for her.

Bertie Poore kept in contact with the other four Sisters after they left Woodman Point, something which until this visit, Bertie's family had been unaware of.

## FROM THE PRESIDENT

What a year it has been with COVID-19. I would firstly like to thank our committee for doing a great job during the year: to Neil for producing *Pratique*, assistance, and tour guiding; to Mike, our treasurer for keeping the books and organising and supervising renovations to the Crematorium and morgue slab; to Ainslie, our secretary, for her expertise in applications for grants and our website, to Matt for his assistance in relation to the camp; and to Jenni for her hard work in coordinating and running tours.

Jenni's passion for preserving the heritage and history of Woodman Point Quarantine Station is immense and it was with great pleasure, she was awarded a Life Membership of Friends at our recent AGM.



I would also like to thank Kym, Michelle, Ryan and Scott from the Camp staff for all their assistance during the year.

And thank you to all members who attended our Busy Bees to clean up the IH in February and October.

Because of COVID-19, we had to suspend our heritage tours in March. Unfortunately, Jenni had to cancel so many tours during the suspension period, so it was great to recommence in October, albeit with limited numbers. Since resuming, interest in our tours has been tremendous. Thank you to all our guides: Jenni, Chris, Ian, Karen, and Neil.

Our membership base has grown over the past year as we welcomed more than a dozen new members and we have enjoyed a consistent flow of special visitors throughout the year. They included Neil Peacey, the great nephew of nurse Ada Thompson, Dr Glen Davies researching Sister O’Kane’s history, the Friends of Anzac House and Prof. Bruce Walker and Dr. Anthony Armson of Murdoch University. Sister Eugenia and fellow sisters from the St John of God community in Subiaco paid two visits, one in March and another in October to remember Sister Barbara who died whilst nursing at Woodman Point in 1930.

Despite not conducting many tours, Friends have been busy throughout the year with a variety of projects. Thanks to Mike and Trevor for arranging the building of the model of the *Boonah* and to Trevor for the restoration of the table for the model to sit on. Nurse Williams’ headstone was restored and thanks to Mike for his assistance in installing it. The grave of the Fijian seamen was tidied up and the Camp installed interpretative

signage remembering those people buried in cemetery no. 1.

Various work has occurred around the Crematorium over the course of the year. Thanks to a significant City of Cockburn grant raised by Ainslie, the building was painted, an excellent job being done by Antonelli Painting and overseen again by Mike, and its window louvres were replaced with new perspex. And we are now looking forward to the restoration of the chimney stack, courtesy of Perth Scaffolding, Mercer & Co. and Veolia Refractories in the coming months.

The pathway to the former morgue site will also open in the coming months, thanks to work by Parks and Wildlife Services clearing a pathway, WA Limestone who provided the crushed limestone, and M J Walker Contracting who installed the pathway, all overseen and assisted by Graeme and Mike.

The memorial tree for former Officer in Charge (1927 – 1929), Mr Arthur Dumble, has been replanted several times. There’s obviously something in that soil!!! Hopefully, the fifth planting will be the last time we have to replace the tree. Thanks to Betty, Greg, Jenni and Mike for their work on this project.

Friends are most grateful for the offer from Camp staff member Michelle Young for Friends to participate in the recent government initiative *Containers for Change*. This initiative would see the recyclable fruit juice tetra paks, normally sent to the standard recycling bin, recycled and proceeds given to Friends. Many thanks also to WA Scouts who have offered to collect the tetra paks and take them to a local collection point each week on our behalf, with money collected

going straight to Friends. All proceeds from this initiative will be reinvested directly into projects that benefit the conservation and promotion of the site's important heritage. Special thanks to Michelle, Matt Hayes and Scouts WA for their generous help on this scheme.

Our historical collection has also benefited this year from many excellent donations that enhance the quarantine story over time. These have included a Stokes stretcher and coal basket, a collection of Sgt. Norman Gillies photos from the *Boonah's* 1918 voyage, a 1900 army medical kit, an old Singer sewing machine, a chain-driven wheelchair, an original copy of the 1918 *Boonah Buzzer*, Poems and Boonah Boys badge, and most recently, a model of the *S.S. Anna Robertson*, the first shipping vessel to use Woodman Point as a quarantine area. These donations and their donors have been acknowledged in **Pratique** over the past year, but to one and all, our sincere thanks once again for helping us tell the quarantine story with artefacts from the past that bring our history to life. Your valued donations have all found a special home in the Isolation Hospital where they will be cared for and appreciated for the story they tell to all who view them.

And finally, I would again like to acknowledge the contribution and work over many years of Andrea Lyndon-James, past president and Life Member of Friends, who passed away on 11 January 2020.

This has been a fruitful year for Friends, despite the many issues and setbacks this pandemic has presented to our global community. I look forward to working

with you all in the coming year to further enhance the unique historical site that is the former Woodman Point Quarantine Station.

Gary Marsh  
President

### LATEST NEWS FROM FRIENDS

- ❖ Sincere thanks to Len and Angela Stock for their very kind donation of a chain-driven wheelchair dating back to the early 1900s. Len and Angela presented the wheelchair to Neil Wilson in October and afterwards enjoyed a private tour of Woodman Point. The wheelchair now has a permanent home on display in the Isolation Hospital.



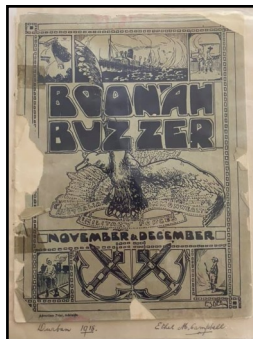
- ❖ The barque *Anna Robertson* was a migrant ship that frequented Australian waters in the early years of European settlement in the Swan River colony. When the vessel cast anchor in Fremantle on 17 December 1851, it was found to have many cases of whooping cough on board and its passengers were placed in quarantine on Carnac Island. Healthy passengers were sent to the beach at Woodman Point where they settled in tents, soon to be joined by those from Carnac Island when it was discovered that there was little fresh water on the island. This became the first time recorded use of Woodman Point for human quarantine purposes.

New member Gerry Brown has kindly donated to Friends a model of the *Anna Robertson*, that he built, for display in the Isolation Hospital. Many thanks indeed Gerry for this unique addition to our historical displays.



- ❖ There's also new additions to our *Boonah* memorabilia, thanks to Alan Whyte, the grandson of Private E.V. Whyte, a soldier on the *Boonah* during its fateful sailing of October 1918. Alan had very kindly donated an original 1918 *Boonah Buzzer*

newsletter, a Boonah Boys pin and poems from his grandfather's collection. Many thanks indeed to you Alan.



- ❖ The next meeting of Friends will be held on Thursday 28 January 2021 in the Isolation Hospital, commencing at 6.30pm. All members are welcome to attend.

### UPDATE FROM THE CAMP

Beyond our expectations, the camp has had an exceptionally busy second half of the year as we bounced back from the COVID-19 restrictions. Program activity business for July-December 2020 was the highest on record for the camp, and we anticipate that the start of next year will continue this trend.

Our 'revitalised' Quarantine Station Historical Tour program incorporating a short visit to the Isolation Hospital has continued to receive very positive feedback from teacher and participants alike. Since the program was first trialled in September until the end of November, we have had 176 participants take-part. These tours have primarily been conducted by myself and Michelle



Young. Thank you to Gary and the FOWPRC group for their continued support of this program.

I would like to congratulate the FOWPRC group on implementing a range of COVID safety measures which has allowed the recommencement of Heritage Tours in Spring. We are now charged with the implementation of 'Contact tracing' measures, adding another layer of complexity on our operations. No doubt the FOWPRC group will again respond positively to this new process, as has been the case with capacity restrictions.

I am pleased to announce that the painting restoration work requested by Gary has been approved. Kym Lawrence will lead this project in collaboration with the FOWPRC to give the Isolation Hospital walls and ceiling a bit of long-awaited love! The restoration project for the 'administration and doctors precinct' area has progressed and we are now at the stage of submitting a Development Application to the City of Cockburn. Again, I'll continue to keep you posted on the progress of this project.

On behalf of the Camp, I would like to congratulate Jenni Carder for receiving Life Membership. Jenni has been a fantastic voice for the group for a number of years, picking up the President baton after the unexpected passing of Earle Seubert. Jenni, your contributions and energy have created a new and exciting era for the group – a legacy that will be hard to match. Well done on your achievement and your deserved recognition!

I'd like to thank all the members for their contribution this year. Finger's crossed

that 2021 will see life regain some of its normality!!

Matt Hayes  
Camp Manager

### 2020 TOURS: A SUMMARY

When the new year dawned, our tour bookings for 2020 looked promising. Two night tours in January were fully booked and a great success with a total of 48 people enjoying seeing Woodman Point from a different perspective at night.

But March arrived, and before we could even commence what was looking to be a very busy program, COVID-19 struck and more than 18 tours were cancelled over the coming months.

We were delighted in September to recommence our Heritages Tours, and, in accordance with COVID-19 restrictions, our tour guides all undertook COVID awareness training and the number of visitors on each tour was limited to 15. Since that time, our tour guides have led 12 tours and about 180 people around the Quarantine Station.

To further diversify the demography of people visiting Woodman Point, Friends decided this year to trial a regular monthly tour for members of the public, individuals and couples who are unable attend a group Heritage Tour on a weekday. These tours are held on the third Sunday of each month and are pre-booked online through the Friends' website. To date, this initiative has proven very successful with the October and November tours fully booked with 15 participants on each occasion.

We will also trial some summer tours in January in cooperation with our close neighbours at Discovery Parks – Woodman Point to provide a different morning activity for those enjoying their summer holidays in the local area.

## Pratique GOES MORE DIGITAL

At a recent Friends meeting, it was decided that, wherever possible, **Pratique** would be emailed to members rather than be posted through the regular mail system. It was felt that, with reduced mail deliveries, this would enable a more timely and reliable delivery of our magazine to our members.

This change will affect approximately 10 members who, until now, have received **Pratique** through the mail.

Friends trust that members will see the advantages of this initiative and enjoy the opportunity to enlarge **Pratique** and its stories on their computer screen. Any members who have an email address and are still receiving their copy of **Pratique** by mail should advise us by email of their email address and their next copy of **Pratique** will be delivered to their computer.

In addition, Friends will shortly commence depositing a digital copy of each publication of **Pratique** with the State Library so that a record of our group and its activities will be preserved and available for use by future generations. This is also a legal requirement under the *Legal Deposit Act 2012*.

It is anticipated that hard copies of **Pratique** will also be made available for consultation in the Isolation Hospital's reference collection and during 2021, will also be uploaded digitally to the Friends' website.

Friends have been gathering copies of previous editions of **Pratique** to ensure all earlier publications are included in this preservation program. However we are missing back copies: specifically from 2010 (all editions), Autumn 2011, Winter 2013, Summer 2015, Spring 2016, Summer 2018 or Winter 2019.

If you still hold copies of these back editions of **Pratique** and are happy to lend them for scanning, please contact Neil Wilson on 0409 703 746.

## NEW MEMBERS

Friends welcome the following people who have recently joined our organisation.

- Fiona Wheeler and Tim Maine from Bibra Lake
- Sharyn McCaskey from Cooloongup
- Gerry and Diana Brown from Floreat
- Eric Davies from Coolbellup
- Chris Davies from North Coogee

The President and Committee of Friends extend to all members and their families their best wishes for the festive season and wish all a safe, healthy and happy 2021.



## HERITAGE TOURS

Friends of Woodman Point Recreational Camp operate regular heritage tours of the former Quarantine Station and the Isolation Hospital Museum for community groups.

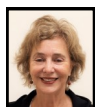
Morning tea is included in all tours, and if required, lunch can be provided at an additional cost.

Periodic open weekends provide tours for members of the public to visit the site and to learn about this important Western Australian heritage site.

We acknowledge the contribution of our valued volunteer tour guides who lead our heritage tours of the former Quarantine Station.



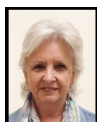
Jenni



Chris



Ian



Karen



Suzie



Gary



Neil

We also acknowledge Daniel and the staff of Accolade Catering who provide the delicious lunches enjoyed by our tour participants.

## UPCOMING HERITAGE TOURS

### October 2020

5 Oct	Rockingham Autumn Club
13 Oct	Rockingham Autumn Club
16 Oct	St Benedict's Applecross
18 Oct	Monthly public tour

### November 2020

10 Nov	People Who Care
14 Nov	Sunny West Caravan Club
15 Nov	Monthly public tour
17 Nov	Subiaco Probus

---

COMMITTEE 2020 – 2021

---

**PRESIDENT**  
Gary Marsh



**TREASURER**  
Mike Poore



**PAST PRESIDENT**  
Jenni Carder



**SECRETARY/  
MEMBERSHIP**  
Ainslie Poore



**VICE PRESIDENT**  
Neil Wilson



---

**EX-OFFICIO COMMITTEE MEMBER**  
Matt Hayes



---

MEMBER SERVICES

---

**HERITAGE TOUR BOOKINGS**  
Jenni Carder



**PRATIQUE**  
Neil Wilson



---

WEBSITE MAINTENANCE AND DESIGN

---

